

# Worm pumps SP 11 DMR and DMB



**SP 11** Mixing, pumping, spraying - and all this with just one machine. Why make life difficult when it can be so easy?

The hydraulic SP 11 worm pumps offer ideal comfort. But they are still real slaves for work. Reliable, powerful and easy to operate.



# SP 11 DMM, SP 11 DMR and SP 11 DQR – convincing data



You can quickly spray your SP 11 with over 140 bar pressure with the built-in high pressure cleaner (DMR).



You can set the amount of water needed infinitely variably at the water metering fittings.

	SP 11 DMB	SP 11 DMR	SP 11 DQR
Pump	2L6	2L6	2L74 (3D7)
Output	5 - 55 l/min	2 - 200 l/min (5 - 35 l/min)	
Delivery pressure	25 bar	25 bar (60 bar)	
Delivery distance ( horiz./vert.)*	120 m/ 60 m	120 m (300 m)/ 60 m	
Air compressor	2 cyl. compressor, 3.5 bar 314 l/min Suction performance		
Drive engine	3 cyl.-Diesel engine 15.6 kW at 2,800 rpm	4 cyl.-Diesel engine 21.4 kW at 2,800 rpm	
Chassis	w/o brakes, 1,000 kg	with brakes, 1,200 kg	
Weight	750 kg	900 kg	920 kg
Dimensions	3,297 x 1,386 x 1,142 mm	3,097 x 1,386 x 1,136 mm	
Filling height	1,142 mm	758 mm	

\*Values depend upon medium to be delivered

- **SP 11 DMB with swing mixer**  
Part no. 111 453.010
- **SP 11 DMR with lift mixer with 3 cyl. engine**  
Part no. 111 453.020
- **SP 11 DQR with lift mixer with 4 cyl. engine**  
Part no. 111 453.030
- Torque support cover part no. 213 326.005
- Built-in high pressure cleaning pump (DMR + DQR) part no. 405 560
- dto. for DMB part no. 405 561
- Scraper for mixer with window mixer blades part no. 212 652.000
- Cable remote control with cable drum (60 m) part no. 262 506.009
- Vibrating screen NW 10 part no. 213 490.009
- Vibrating screen NW 6,3 part no. 213 261.005
- Vibrator 12 V for vibrating screen part no. 211 321.002
- Water metering fittings (SP 11 DMR) part no. 213 324.007
- Control cabinet cover part no. 212 719.008

**All types:** with 2 cylinder air compressor, worm pump, pressure gauge with pressure outlet, standard spray gun DN 35, service manual, spare parts list and standard tools.

**Accessories:**



- **Putzmeister Mörtelmaschinen GmbH is a subsidiary of Putzmeister AG worldwide expert in pumping, conveying and mixing of concret, mortar and high density solids**
- **Your Putzmeister partner**
- **Mixer pumps, worm pumps and piston pumps for plaster, mortar und fine concrete**
- **Pneumatic conveyors for floor screed and sand**



Right to make amendments reserved · Images sometimes show special equipment · © 1998 by Putzmeister Mörtelmaschinen · Printed in Germany (20202 Pe)  
Bildnachweis: siehe Stammbaue

# The new SP 11 worm pumps – the result of comfort, performance and over 40 years' experience.

2



The powerful pumps always have sufficient power reserve even over great distances.

## General



For the economic placing of job-site and ready-mix mortar you need reliable and powerful pumps.

Modern worm pumps such as the SP 11 additionally offer comfort which can make your daily work easier. They are still robust and simple to operate.

3



It can be so easy. The SP 11 DMB with the comfortable swing mixer ...

## Handling and operation



The new SP 11 worm pumps are consequently machines that are ideal for the field.

Already when filling you notice the first differences – and your back does, too. The mixers are extremely low. The filling height for the *SP 11 DMR* is just 75 cm. When the material has been completely mixed, you simply tip it into the large pumping zone.

For the *SP 11 DMB* you then just swing the mixer round. There are even hydraulics for the *SP 11 DMR* to carry this out for you - you can't get it any easier.

SP 11 worm pumps are driven oil-hydraulically. Here you can regulate the pump output infinitely variably and on request by remote control. It switches over automatically for over-pressure. The hydraulics even enable you to pump in reverse.

4



... or the *SP 11 DMR* with the hydraulic lift mixer – pure comfort.



The "SP 11 family": *SP 11 DMB* with swing mixer (in front), *SP 11 DMR* or *SP 11 DQR* with lift mixer (behind) and the *SP 11 DHF* for floorscreed (upper left)

5

You can thereby convey residue material which is still in the machine. Or you use it to remove a blockage elegantly and effectively.

*SP 11* worm pumps have especially powerful but also robust 3 and 4 cylinder engines. These have an enormous pump performance right from the start – ideal for especially tough material. Your *SP 11* can also work at low speed. This saves on fuel, reduces the noise and is less wear and tear on your machine.

## Service and maintenance

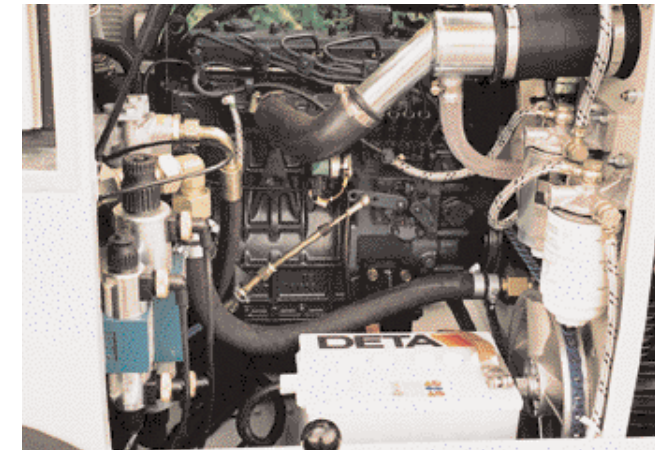


Ideal in the field both with regard to servicing and maintenance.

Do you want to get right inside your machine? No problem. Just take off the lid and you have good access to everything. Just one reason why you save up to 50% time when exchanging wear parts – such as for example, the worms.

The connections for the integrated high pressure cleaner are external. Cleaning is therefore carried out when the cover is closed and the inside stays dry. But the new *SP 11* worm pumps still meet even the highest requirements. Just ask your Putzmeister dealer.

6



The modern hydraulics supply your *SP 11* with sufficient power at every speed.

7



You can control your *SP 11* with the clearly-arranged, lockable control cabinet.

8



The light-weight cover can be opened extremely widely. It is therefore very easy for you to reach all the inside parts.

2

3